

FRENCH FITNESS

FFS-8SMJG-V0 / FFB-8SMJG-V0

**FRENCH FITNESS FFS SILVER & FFB BLACK
8 STACK MULTI JUNGLE GYM V0**

ASSEMBLY MANUAL



OR



FEATURES

- Brand: French Fitness
- 11 Gauge Steel
- 65 x 114 x 2.5mm Steel tube
- ASTM A36 steel frame ensures maximum structural integrity
- Each frame receives an electrostatic powder coat finish to ensure maximum adhesion and durability
- Standard rubber feet protect base of the frame and prevent the machine from slipping
- Nylon-coated cable meets U.S. military specifications
- Fiberglass-impregnated nylon pulleys feature sealed bearings
- Grips retained with aluminum collars, preventing them from slipping during use
- Hand grips are a durable urethane composite
- Solid-steel weight plates. Top weight plate is fitted with self-lubricating bushings

Stations Included (Standard)

- (2) Dual Pulley Lat Pulldown (Weight Stack: 264 lb)
- (2) Dual Pulley Low Row (Weight Stack: 264 lb)

- (2) Adjustable Pulleys (Weight Stack: 220 lb each) - Feels like 110 lbs each because of 2:1 ratio.
- (2) Fixed Tricep Extension (Weight Stack: 220 lb)
- (1) Pull Up Station

Stations Included (Optional)

- (2) Dual Pulley Lat Pulldown (Weight Stack: 264 lbs)
- (2) Dual Pulley Low Row (Weight Stack: 264 lbs)
- (4) Adjustable Pulleys (Weight Stack: 220 lbs each) - Feels like 110 lbs each because of 2:1 ratio.
- (1) Pull Up Station

Standard Cable Attachments

- (2) 48" Lat Pulldown Bar
- (2) Seated Row / Chin Bar
- (2) Tricep Rope
- (2) Stirrup Handle

TECH SPECS

- Vinyl Color: Black
- Distance Between Cable Columns: 102"
- Machine Weight: 3400 lbs (1542 kg)
- Dimensions: 224"L x 149"W x 95"H (567 cm x 378 cm x 240.6 cm)
- Pulleys Swivel 180 Degrees
- Number of Vertical Adjustments: 20
- Distance from Ground to Lowest Pulley Adjustment: 7" (Measured From Center of Pulley)
- Distance from Ground to Highest Pulley Adjustment: 78" (Measured From Center of Pulley)

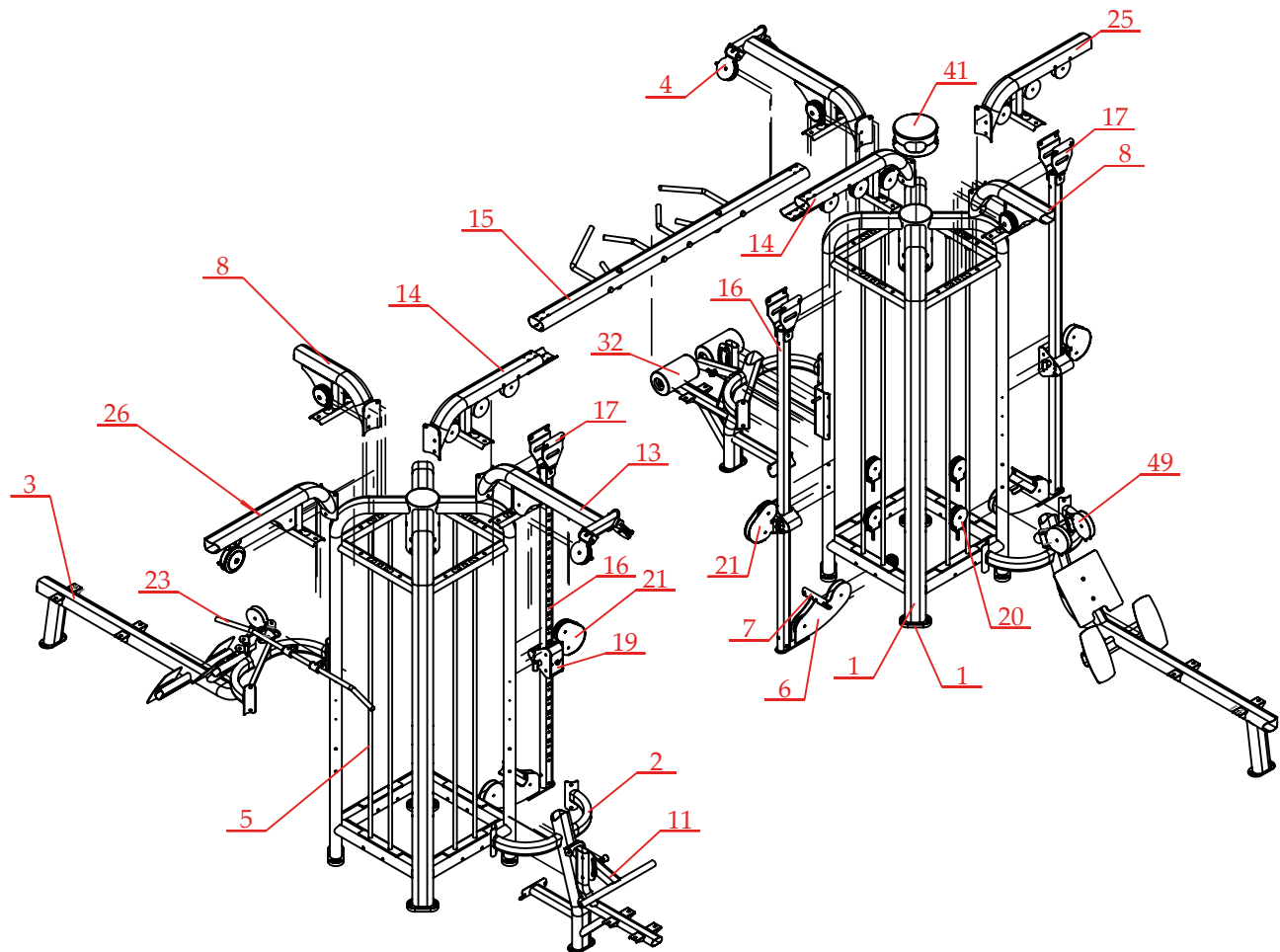
WARRANTY

10 Years Parts, 1 Year Labor (Commercial)

ASSEMBLY STEPS

Technical requirements

1. The dimension tolerances not specified are in accordance with GB/T 1804-2000m grade.
2. Chamfer C1 not specified.
3. Sharp corners are blunted.

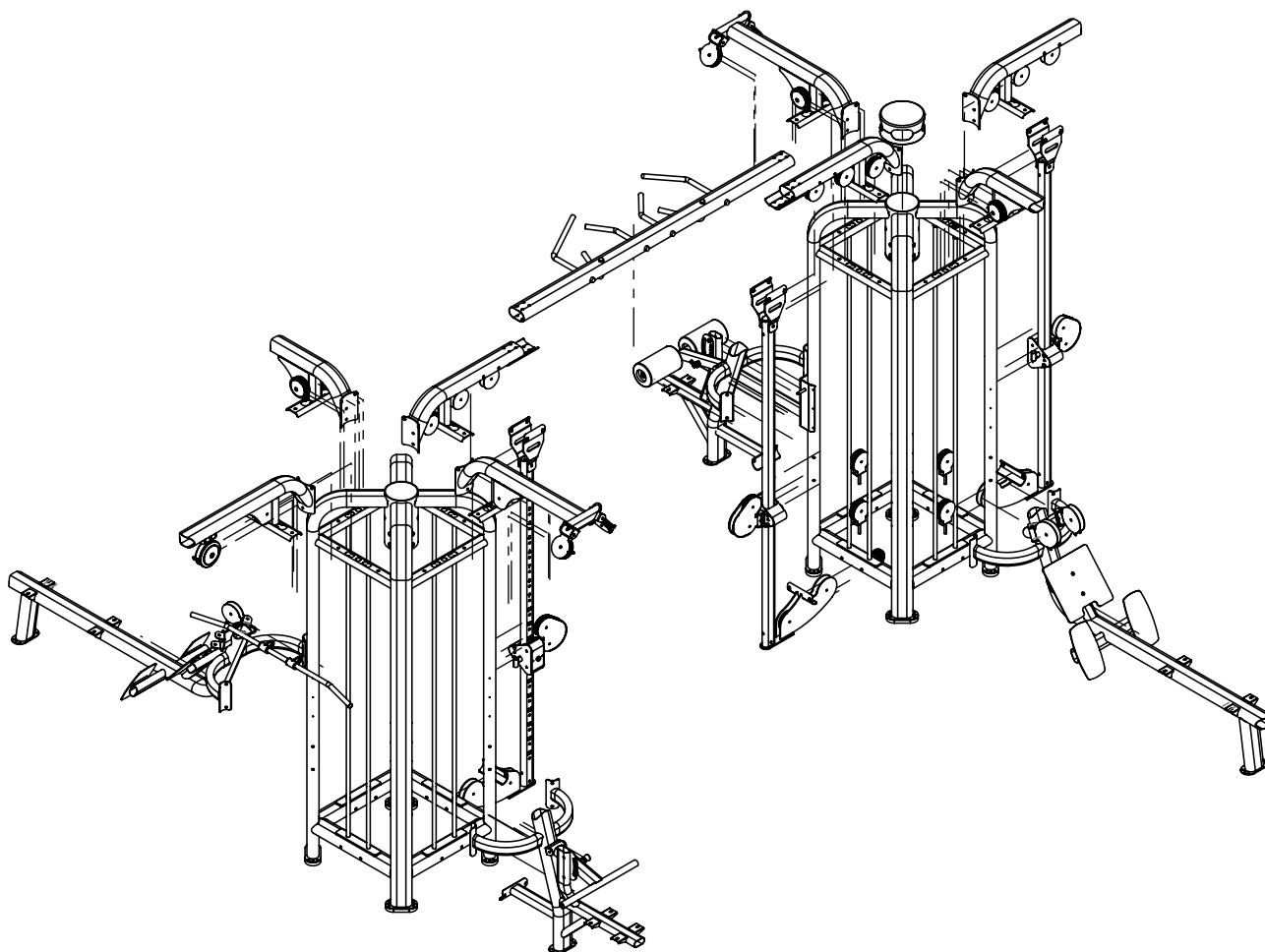


Item No.	Drawing No.	Material	Quantity	Remarks
1.	J04-005-2 pieces	Q235A	2	
2.	J03-007-2 pieces		2	
3.	J03-010-2 pieces		2	
4.	J04-002	Ordinary carbon steel	5	
5.	J04-007-16 pieces		16	
6.	J03-002-3 pieces		2	
7.	J04-004 (mold already opened)		3	
8.	J04-003		2	
9.	Pulley		22	
10.	Pulley cover		6	
11.	J03-011		2	

ASSEMBLY STEPS

Item No.	Drawing No.	Material	Quantity	Remarks
12.	J03-008		2	
13.	J04-001		2	
14.	J03-004-2 pieces		2	
15.	J03-015		1	
16.	J04-004-3 pieces		3	
17.	J03-014		6	
18.	Mirror J03-002-3 pieces		1	
19.	J04-008-3 pieces		3	
20.	movable pulley		4	
21.	movable side pulley		3	
22.	guard plate		1	
23.	J03-012	aluminum rod LY12	1	
24.	J03-013		2	
25.	J03-005-1 piece		1	
26.	J03-003		1	
27.	32-25L45	fixed sleeve Material <unspecified>	2	
28.	Instrument 7A-2-03	aluminum rod LY12	2	
29.	circlips for shaft--type a large gb		2	
30.	pull rope		1	
31.	deep groove ball bearing 6202-2RZ	standard part	3	
32.	leg press round pad		2	
33.	hexagon head bolts--product grade c gb		2	
34.	hexagon bolts M10X120	0.08	1	
35.	GB/T 70.1-2008 [Hexagon socket head screws M10×100]	stainless steel	1	
36.	hexagon nuts grade c gb		1	
37.	M20 knurled shaft ordinary carbon	steel	2	Surface chrome plating
38.	round tube bottom cover		1	
39.	cold drawing rod ordinary carbon	steel	1	
40.	protective cover (1)		1	
41.	GB/T 896-1986 [Open retaining ring 12]		3	
42.	40-80 end cover	ABS	1	
43.	Housing-4		1	
44.	Compression spring		1	
45.	Pull pin cap		1	
46.	150 round pulley housing		1	
47.	J04-002 (changed)	ABS	1	
48.	J04-002 (changed in 20241105) Ordinary carbon	steel	1	
49.	Mirror J04-002 (changed in 20241105)		1	

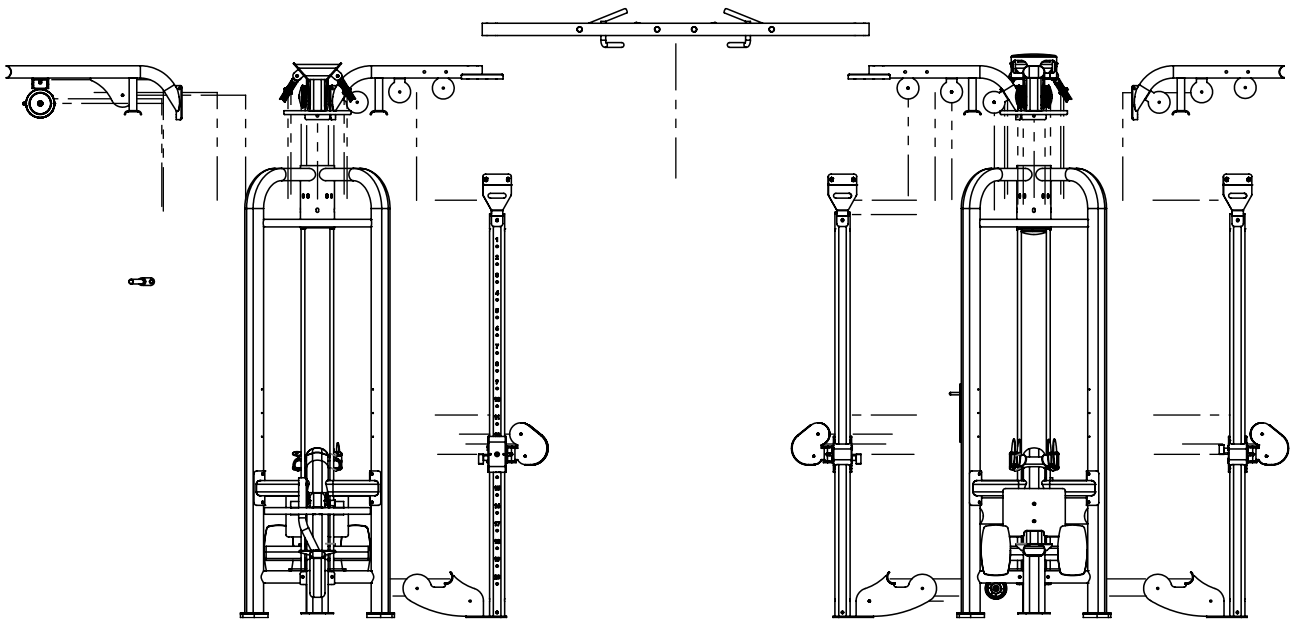
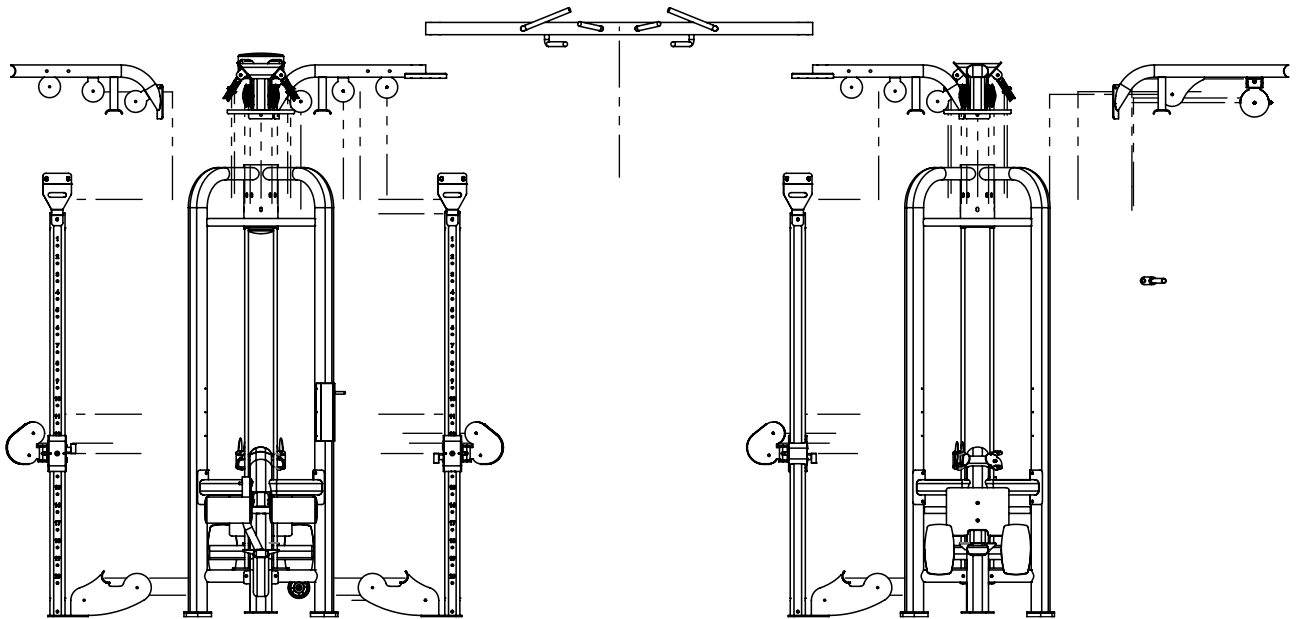
ASSEMBLY STEPS



Technical requirements

1. The dimension tolerances not specified are in accordance with the requirements of GB/T 1804-2000m.
2. The chamfer C1 is not specified.
3. The sharp corners are blunted.

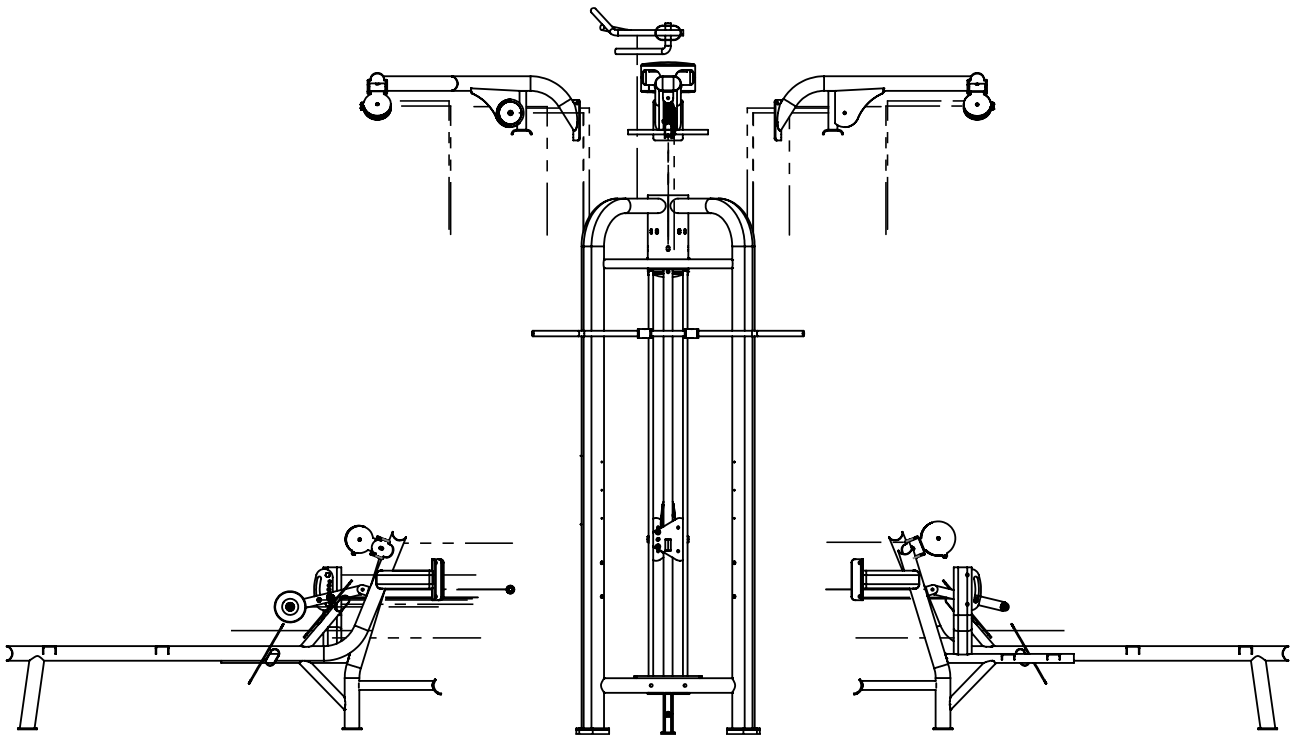
ASSEMBLY STEPS



Technical requirements

1. The dimension tolerances not specified are in accordance with the requirements of GB/T 1804-2000m.
2. The chamfer C1 is not specified.
3. The sharp corners are blunted.

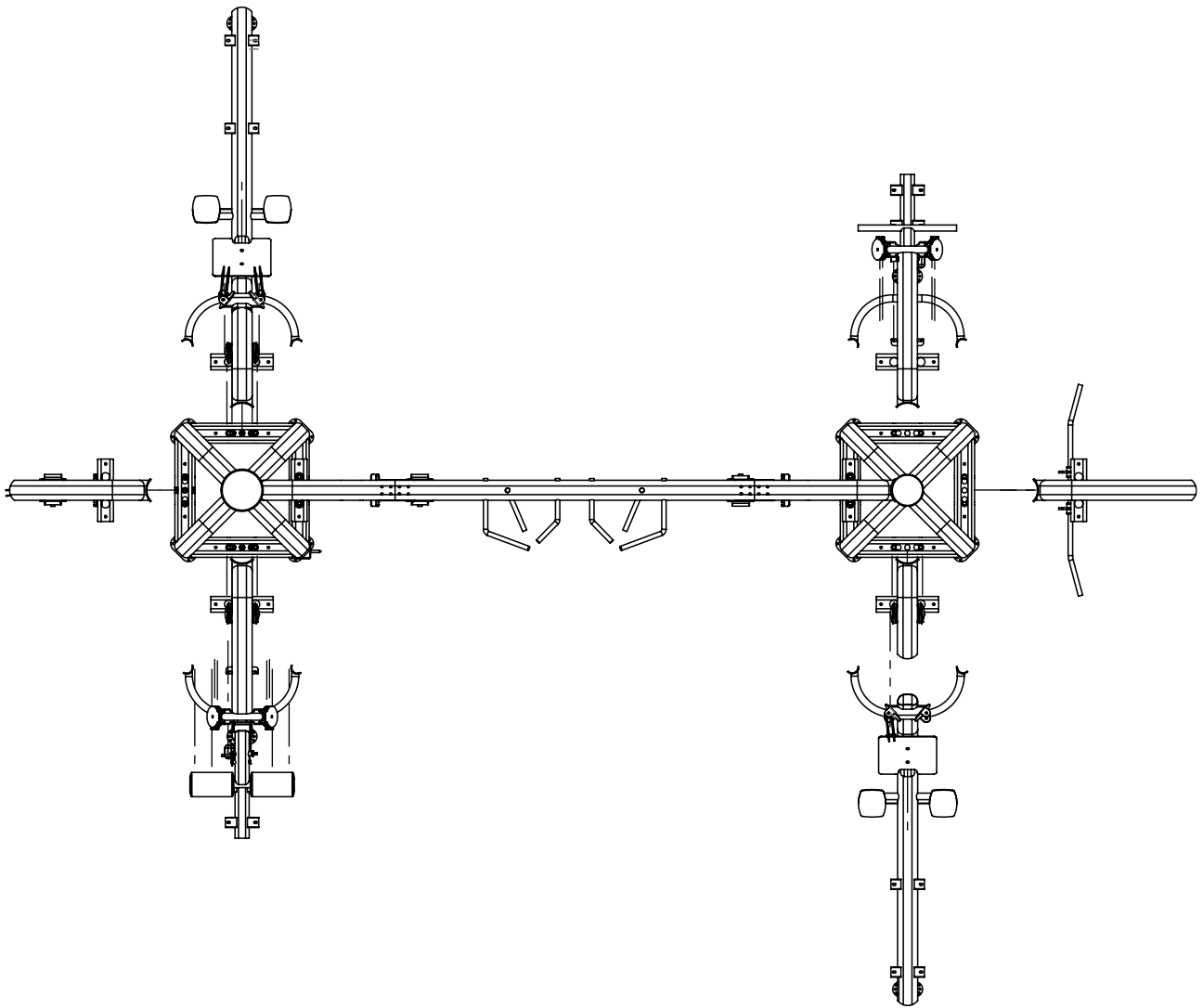
ASSEMBLY STEPS



Technical requirements

1. The dimension tolerances not specified are in accordance with the requirements of GB/T 1804-2000m.
2. The chamfer C1 is not specified.
3. The sharp corners are blunted.

ASSEMBLY STEPS



Technical requirements

1. The dimension tolerances not specified are in accordance with the requirements of GB/T 1804-2000m.
2. The chamfer C1 is not specified.
3. The sharp corners are blunted.

WEIGHT STACK ASSEMBLY



ADJUSTABLE CABLE CROSSOVER

WEIGHT STACK ASSEMBLY



LAT PULLDOWN

WEIGHT STACK ASSEMBLY



LOW ROW

WEIGHT STACK ASSEMBLY



TRICEPS PUSHDOWN
